



ROHO® AGILITY CARBON™ Back System Operation Manual



Supplier: This manual must be given to the user of this product.

Operator (Individual or Caregiver): Before using this product, read instructions and save for future reference.

s h a p e f i t t i n g t e c h n o l o g y®

Table of Contents

Intended Use	2
Important Safety Information	2-3
Parts Detail	4
Product Specifications	5
Wheelchair Compatibility	6
Angle Adjustment	7
Hardware Re-assembly	8
Installation and Height Adjustment	9
AGILITY CARBON Removal Flip AGILITY CARBON	10
Cover Removal and Installation	11
Foam Pad with Air Insert Removal and Installation Foam Insert Installation	12
Air Insert Adjustment	13
Accessories	14
Troubleshooting	15
Maintenance, Disposal, and Limited Warranty	15
Cleaning and Disinfecting	16



Manufactured by ROHO, Inc.

100 North Florida Avenue, Belleville, Illinois 62221-5429

U.S.A.: 800-851-3449 • Fax: 888-551-3449 • Customer Care: cc@roho.com

Outside the U.S.A.: 618-277-9150 • Fax: 618-277-6518 • intl@roho.com

ROHO.com

© 2016 ROHO, Inc.

The following are trademarks and registered trademarks of ROHO, Inc.: ROHO®, AGILITY®, AGILITY CARBON™, and shape fitting technology®. Zytel® is a registered trademark of DuPont.

Products in this manual may be covered by one or more U.S. and foreign patents and trademarks. For further details, please refer to ROHO.com.

ROHO, Inc. has a policy of continual product improvement and reserves the right to amend this document. A current version of this document is available at ROHO.com.

Intended Use

The ROHO® AGILITY CARBON™ Back Systems (AGILITY CARBON) are lightweight backrest replacement systems for wheelchairs and are intended to provide trunk/pelvis support and positioning. AGILITY CARBON has a weight limit of 265 lbs. (120.2 kg). Models include:

- ROHO® AGILITY CARBON™ Minimum Contour Back System
- ROHO® AGILITY CARBON™ Mid Contour Back System

ROHO, Inc. recommends that a clinician experienced in seating and positioning, be consulted to determine if AGILITY CARBON is appropriate for the individual's particular seating needs.

ROHO medical products are intended to be part of an overall care regimen. ROHO, Inc. recommends that a clinician make product recommendations based upon an evaluation of the individual's medical and therapeutic needs and overall condition.

Important Safety Information

Warnings:

- **DO NOT** use the product without first reading and understanding this manual. If you are unable to perform any of the tasks in this manual, seek assistance by contacting your clinical caregiver, distributor, or ROHO, Inc.
- Follow all instructions and safety information provided with the product and provided by the manufacturer of your wheelchair or other accessories.
- Skin/soft tissue breakdown can occur due to a number of factors, which vary by individual. Check skin frequently, at least once a day, especially those areas covering bony prominences. Redness, bruising, or darker areas (when compared to normal skin) may indicate superficial or deep tissue injury and may need to be addressed. If there is any discoloration to skin/soft tissue, **STOP USE** immediately. If the discoloration does not disappear within 30 minutes after disuse, immediately consult a healthcare professional.
- The product should be installed and adjusted by a qualified and competent medical equipment provider or licensed healthcare professional.
- The product must be sized correctly to the individual and the wheelchair.
- As with any addition to a wheelchair, the product may affect your wheelchair's stability. Before using the product, consult with a clinician to determine whether your wheelchair requires additional modifications.
- **DO NOT** lean over the top of AGILITY CARBON. Doing so may cause a change in the center of gravity, and the wheelchair could tip over.
- Check daily to confirm tightness of the screws. Retighten loose screws, following instructions in this manual. Check daily for wear or breakage. **DO NOT** use the product if any part cannot be tightened or is broken. Periodically, the product should be thoroughly inspected by a qualified technician.
- **DO NOT** lift or push a wheelchair using any part of AGILITY CARBON because it may become detached from the wheelchair.

Warnings - Motor Vehicle Transportation:

- AGILITY CARBON is **NOT** designed to be used for seating in a motor vehicle, and **DOES NOT** meet Federal standards for motor vehicle seating. The risk of an accidental disconnection that could result in a fall and potential serious injury has not been assessed.
- **ALWAYS** transfer to an approved vehicle seat before the vehicle begins moving.
- **ALWAYS** store AGILITY CARBON safely during transport to avoid damage. If AGILITY CARBON has been involved in an accident during transport, see **MAINTENANCE**.

Important Safety Information, continued



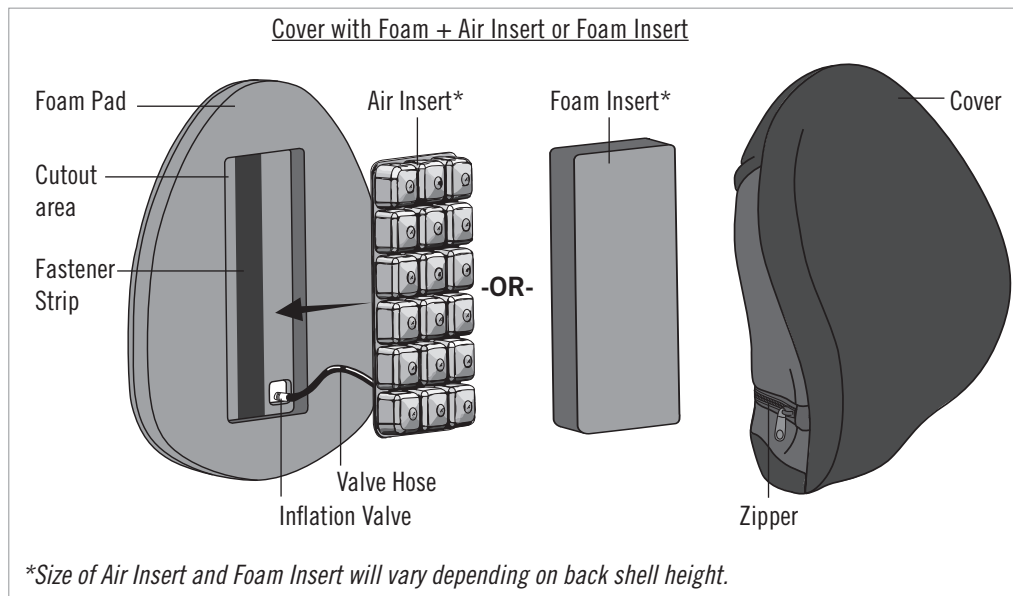
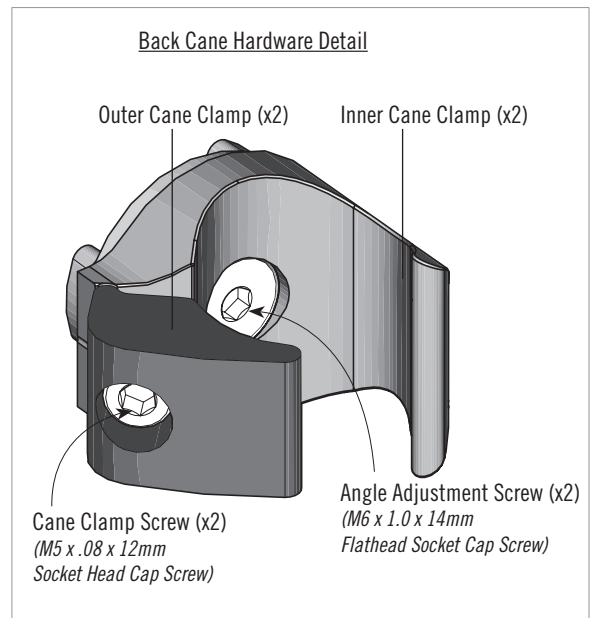
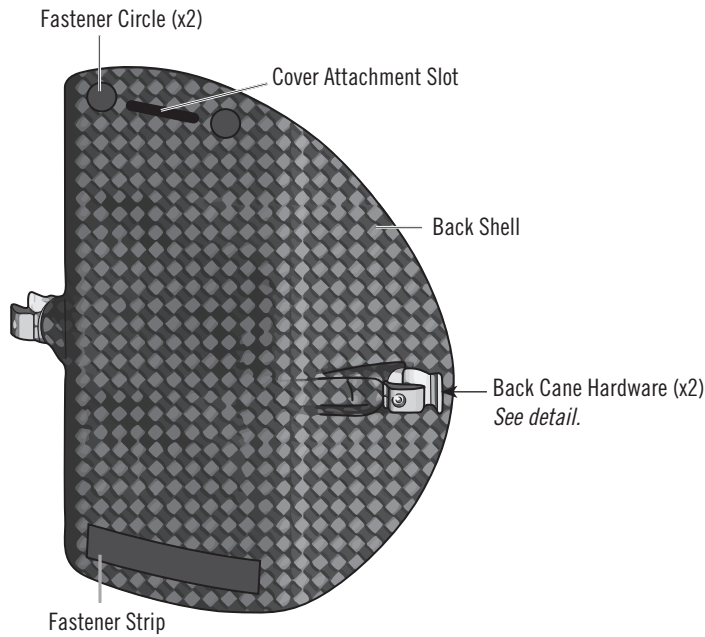
Cautions:

- AGILITY CARBON is intended to be used with an AGILITY CARBON cover, foam pad, and either the the air insert or the foam insert. The air insert and the foam insert are not intended to be used together.
- Protect the AGILITY CARBON from blunt force shocks that may cause damage and/or breakage.
- Use of any hardware or components other than those approved by ROHO, Inc. for use with AGILITY CARBON may result in product damage or failure and may void the warranty.
- The components of an AGILITY CARBON are not intended to be used separately from AGILITY CARBON or in conjunction with other wheelchair back systems.
- Unless otherwise stated in this manual, AGILITY CARBON is not intended to be used with, and has not been tested for use with, other manufacturers' accessories.
- Altering AGILITY CARBON may affect its performance and void the warranty.
- Metal components may become hot if exposed to high temperatures or cold if exposed to low temperatures.
- Do not expose the product or components to high heat, open flames or hot ashes.
- Prolonged exposure to ozone may degrade materials used in the cover, affect the performance of the cover, and void the product warranty.

Parts Detail

Package Contents:

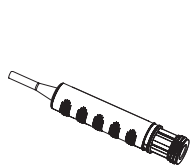
Note: A tape measure or ruler and torque wrench are recommended but are not included in the package contents.



Operation
Manual



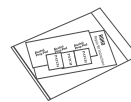
Product
Registration
Card



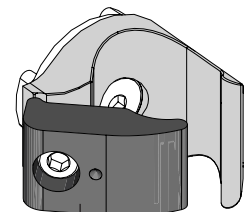
Hand Pump



T-Handle Wrench
(4mm)



Repair Kit



3/4" Outer Cane Clamp (x2)
(Select Models Only)

To order replacement parts, contact your product provider or ROHO, Inc. or visit therohostore.com.

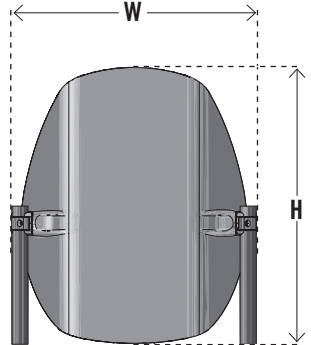
Product Specifications

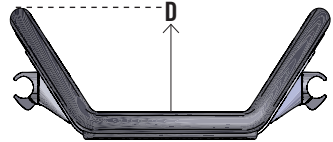
Materials

Back Shell: Carbon Fiber Hardware: Aluminum, Steel, Zytel® Cover: Spacer fabric front and fluid-resistant back and flaps with hook and loop fasteners to secure the cover to the back shell.	Foam Pad: Polyurethane front; polyethylene back Foam Insert: Polyurethane Air Insert: Polyether polyurethane front; urethane-coated nylon back Lumbar Support Pad (<i>optional accessory</i>): Polyurethane
---	--

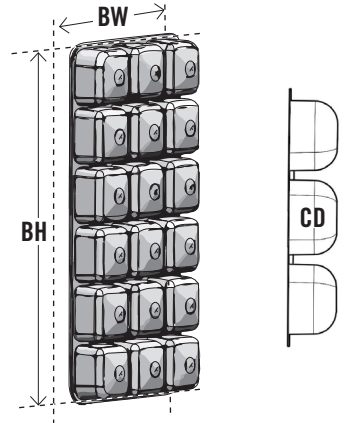
Sizing

All measurements are approximate.

Width (W) - in. (cm):	Height (H) - in. (cm):	
14 (35.5)	10 (25.5)	
15 (38.0)	13 (33.0)	
16 (40.5)	16 (40.5)	
17 (43.0)		
18 (45.5)		
Width (W) measurements are taken from the outside of the back cane to the outside of the back cane.	Height (H) measurements are taken from the center edge to the center edge between the narrow and wide ends of the back shell. Note: The cover assembly is not included in the height measurement.	

Depth (D)		
(in.)	(cm)	
Minimum Contour	3	7.5
Mid Contour	4	10.0
Depth measurements are taken from the center, front surface to the highest point of the contoured edge.		
		

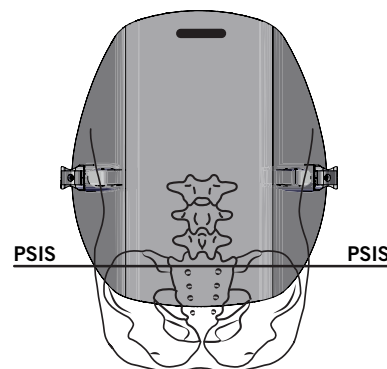
Weight Range	
(lbs.)	(kg)
2 to 3	0.9 to 1.4
The weight range is based on the smallest and largest sizes: AGILITY CARBON: 14 x 10 x 3 (35.5 x 25.5 x 7.5) and 18 x 16 x 4 (51.0 x 45.5 x 10.0)	

Adjustable Back Air Insert				
Width (BW): 3 cells, 6.5 in. (16.5 cm)				
Cell Depth (CD) when fully inflated: 1¼ in. (3.0 cm)				
Height (BH)				
# Cells	3	5	6	
in.	6½	10½	12½	
(cm)	(16.5)	(27.0)	(32.0)	
Perimeter included in the width and height measurements is ¼ in. (1.0 cm)				
				


Wheelchair Compatibility

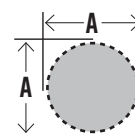
Warnings:

- Wheelchairs with rigidizer bars may not be compatible with AGILITY CARBON, as the rigidizer bar may interfere with angle adjustment. Consult with an equipment provider to determine if AGILITY CARBON is compatible with your wheelchair.
- If AGILITY CARBON is not positioned to make contact with the Posterior Superior Iliac Spine (PSIS), pelvic support and trunk control may be reduced. Make sure that AGILITY CARBON is positioned so that the bottom portion makes contact with the PSIS, as shown.

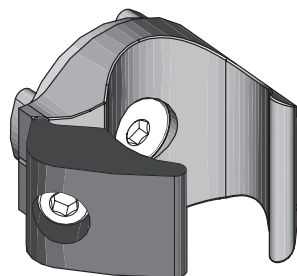


Wheelchair Cane Compatibility: Measure the diameter of your back canes.

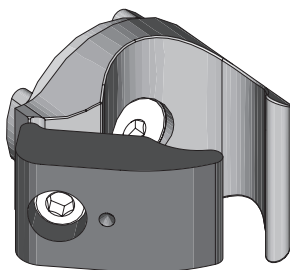
 **Warning:** If the wheelchair back canes are less than 1 in. (< 2.5 cm) in diameter, you will NOT be able to securely install the AGILITY CARBON with the pre-installed hardware. Consult with a clinician or the equipment provider to determine if your wheelchair's back canes are compatible with AGILITY CARBON Hardware. A 3/4" Outer Cane Clamp is available to use with back cane diameters that are 3/4" (2.0 cm).



Wheelchair Back Cane
cross-section showing circular diameter (A)



The Outer Cane Clamp that is pre-installed on the back shell should be used if the wheelchair back cane diameter (A) is 1 in. (2.5 cm)

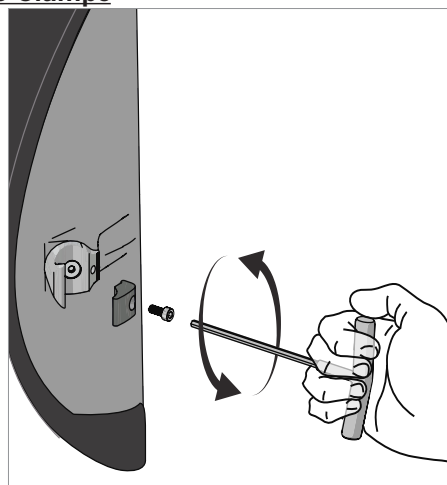


The 3/4" Outer Cane Clamp should be installed if the wheelchair back cane diameter (A) is 3/4 in. (2.0 cm). Follow the installation instructions below.

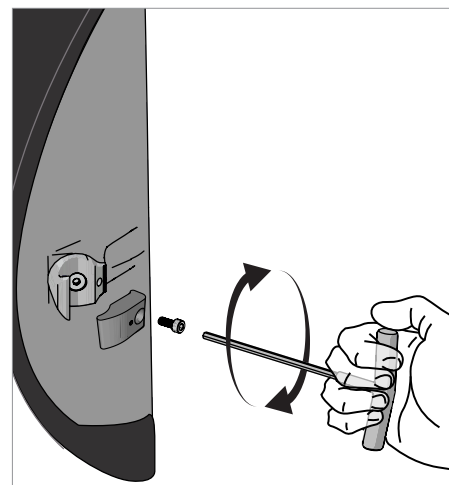
Note: The 3/4" Cane Clamp has a "dimple" next to the opening for the Cane Clamp Screw.

Installation of 3/4" Outer Cane Clamps

1. Use the T-Handle Wrench to remove the cane clamp screw and Outer Cane Clamp from the back shell.
2. Install the 3/4" Outer Cane Clamp using the same cane clamp screw.
3. Make sure the hardware is correctly oriented (See **HARDWARE RE-ASSEMBLY**) and then tighten the cane clamp screw two (2) full rotations.
4. Repeat on the other side.
5. Continue with the AGILITY CARBON adjustment and installation instructions in this manual.



First, remove the Outer Cane Clamps.

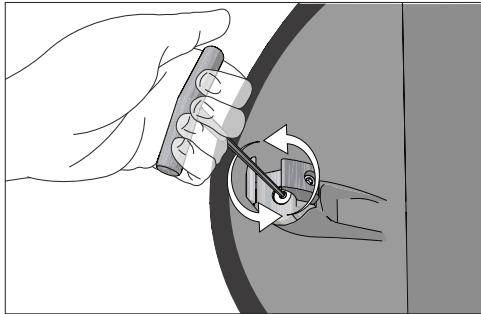


Then, install the 3/4" Outer Cane Clamps.


Angle Adjustment

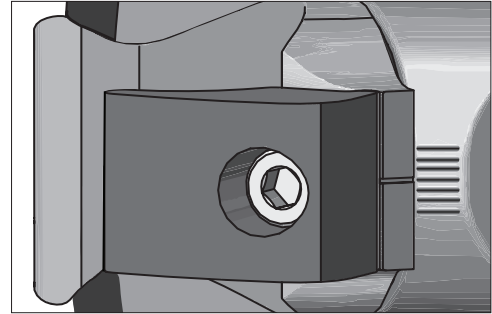
Warnings:

- **DO NOT** adjust AGILITY CARBON while the individual is seated in the wheelchair.
- Angle adjustments **MUST** be performed before you install AGILITY CARBON on the wheelchair. If adjustments are needed after installation, the individual must first transfer out of the wheelchair. See **AGILITY CARBON REMOVAL** to remove the back shell from the wheelchair, and then follow **ANGLE ADJUSTMENT** and **INSTALLATION AND HEIGHT ADJUSTMENT** instructions.

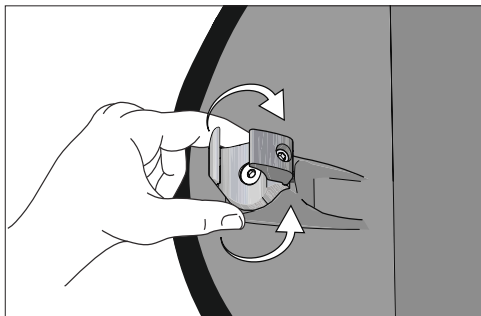


1. Use the T-Handle Wrench to loosen the angle adjustment screw up to one and one-half (1½) full rotations.

 **Warning:** If over-rotation occurs, hardware may come loose and must be reassembled. See **HARDWARE RE-ASSEMBLY**.

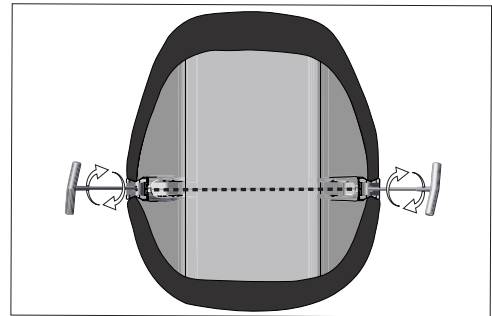


2. Locate the markers on each side of the AGILITY CARBON back shell to prepare for angle adjustment. Use the single marker on the inner cane clamp to line up with the markers on the back shell.



3. To adjust the angle, rotate the inner cane clamp to the desired angle.

Note: The inner cane clamp can be rotated up to 3 markers or 15 degrees in either direction. Each marker is 5 degrees.

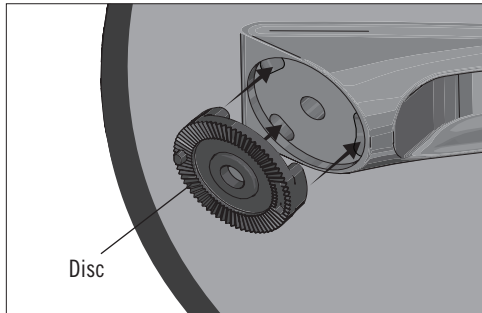


4. Compare the markers on each side to make sure they are equal and aligned. Use the T-Handle Wrench to tighten the angle adjustment screw until snug.

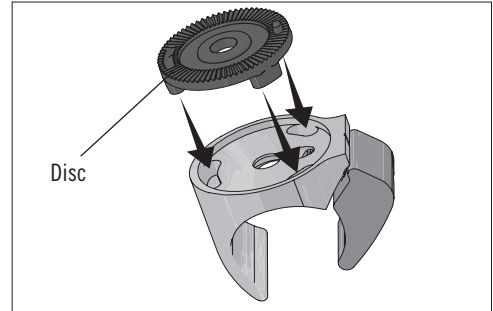
Note: If a torque wrench is available, tighten to no more than 60 inch-pounds (7 Newton-meters).

Hardware Re-assembly

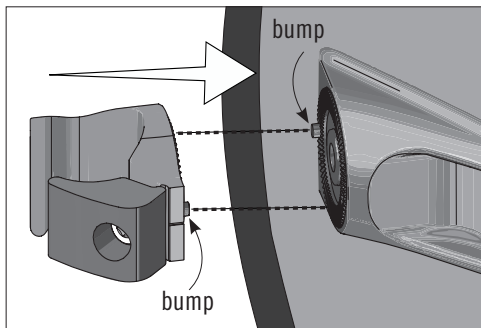
If over-rotation occurs during Angle Adjustment, and the angle adjustment discs in the back shell and inner cane clamp come loose, follow the instructions below. After re-assembly, follow all angle adjustment and installation instructions provided in this manual.



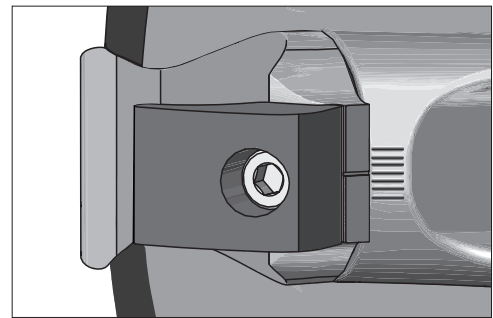
1. If a disc has separated from the back shell, you will need to put it back in place: Press the disc into the grooves on the back shell.



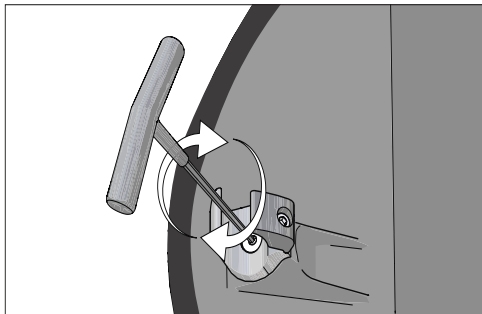
2. If a disc has separated from the inner cane clamp, you will need to put it back in place: Press the disc into the grooves on the inner cane clamp.



3. Place the back cane hardware onto the back shell. For correct orientation make sure the bumps on each disc are lined up at opposite ends, as shown.



4. Before you attach the back cane hardware to the back shell, make sure the angle adjustment markers on the back shell and inner cane clamp are aligned.



5. Replace and tighten the angle adjustment screw using the T-Handle Wrench.

Note: If a torque wrench is available, tighten to no more than 60 inch-pounds (7 Newton-meters).

Installation and Height Adjustment

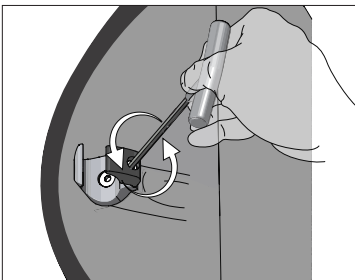
Warnings:

- **DO NOT** install, remove, or adjust the height of AGILITY CARBON while the individual is seated in the wheelchair.
- After you install AGILITY CARBON, and before the individual transfers into the wheelchair, make sure that all hardware is securely tightened. Refer to the recommended torque specifications.

Installation Options:

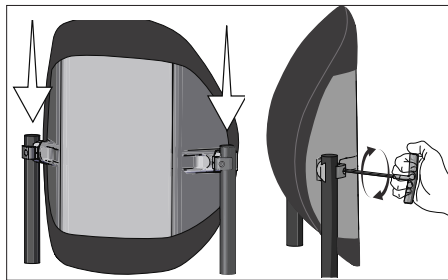
Follow the instructions for **INSTALLATION OPTION A** to install AGILITY CARBON on your wheelchair. If your wheelchair canes have push handles or other equipment that may interfere with installation, follow the instructions for **INSTALLATION OPTION B**.

Installation Option A



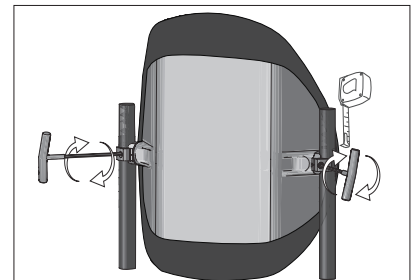
1. Use the T-Handle Wrench to loosen, but not remove, the cane clamp screw. Repeat for the other side.

Note: If the outer cane clamp becomes detached see Step 2 under Installation Option A.



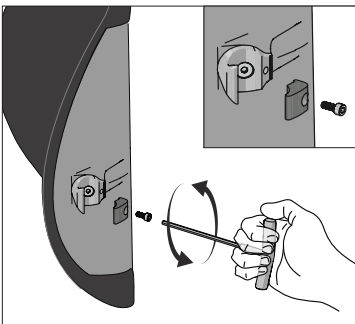
2. Slide the cane clamps onto the canes to the desired height. Use the T-Handle Wrench to tighten the cane clamp screws until snug + one-quarter turn.

Note: If a torque wrench is available, tighten to no more than 40 inch-pounds (4.5 Newton-meters).

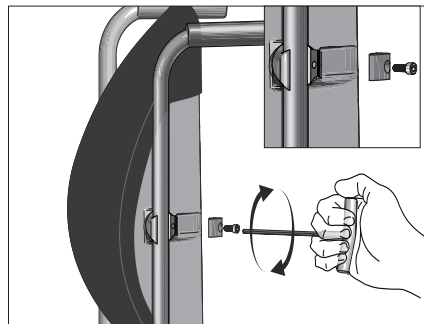


3. Use a tape measure to make sure the cane clamps are at the same height. Adjust the height if needed and re-tighten the hardware.

Installation Option B

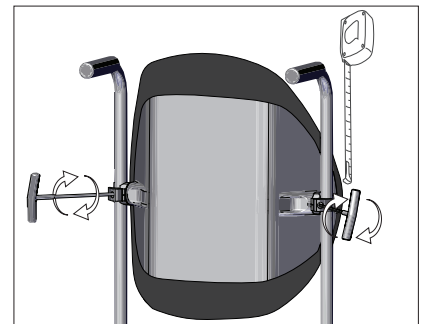


1. Use the T-Handle Wrench to remove the cane clamp screw and the outer cane clamp. Repeat for the other side.



2. Place the inner cane clamp around the cane. Attach the outer cane clamp, using the T-Handle Wrench. Repeat for other side. Slide the back up and down to the desired height. Tighten the cane clamp screws until snug + one-quarter turn.

Note: If a torque wrench is available, tighten to no more than 40 inch-pounds (4.5 Newton-meters).

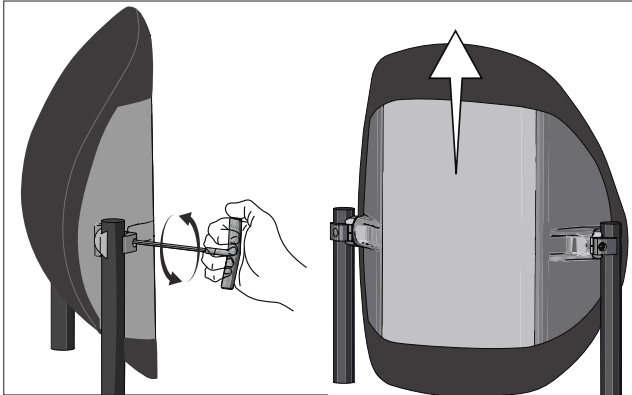


3. Use a tape measure to make sure the cane clamps are at the same height. Adjust the height if needed and re-tighten the hardware.

 **Have the individual safely transfer into the wheelchair.**

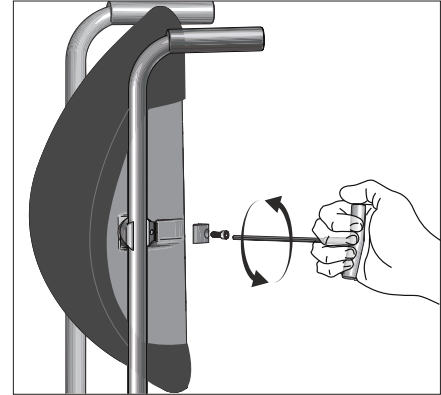
AGILITY CARBON Removal

 **Warning:** DO NOT remove AGILITY CARBON while the individual is seated in the wheelchair.



For back canes without push handles:

1. Use the T-Handle Wrench to loosen, but not remove, the cane clamp screws on each side.
2. Lift to slide AGILITY CARBON off the wheelchair canes.

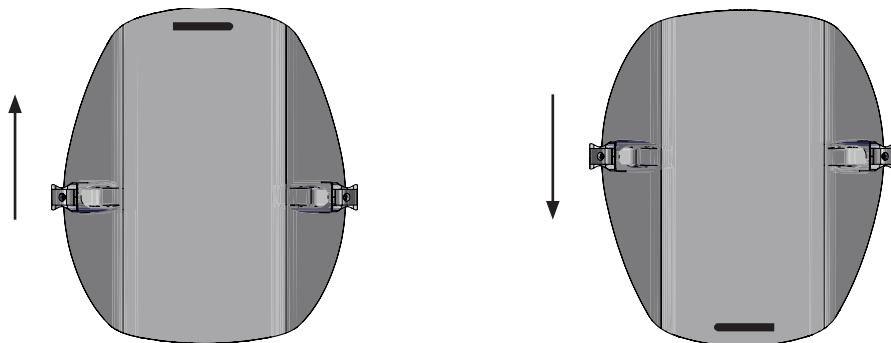


For back canes with push handles:

1. Use the T-Handle Wrench to remove the cane clamp screw and the outer cane clamp. Repeat for the other side.
2. Remove AGILITY CARBON from the wheelchair.

Flip AGILITY CARBON

1. If AGILITY CARBON is already installed, remove the AGILITY CARBON from the wheelchair. See REMOVAL.
2. Rotate the back shell.
3. Adjust and install the AGILITY CARBON following all adjustment and installation instructions provided with the product.

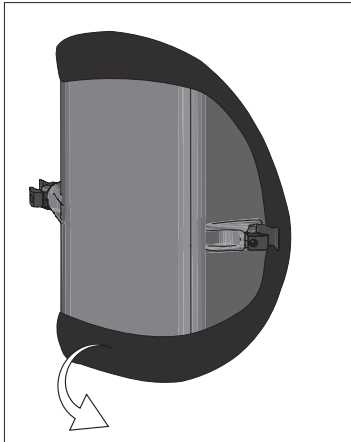


Cover Removal and Installation

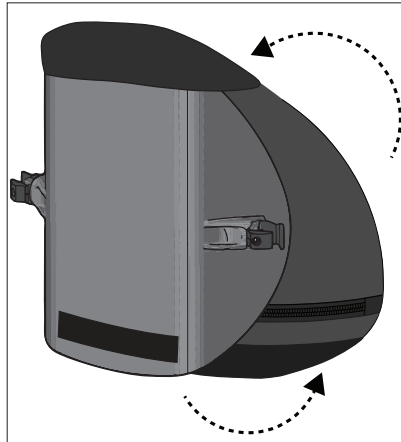
Warnings:

- **DO NOT** remove or install the AGILITY CARBON cover while the individual is in the wheelchair.
- **DO NOT** use the AGILITY CARBON without the cover, the foam pad, and the air insert or foam insert.
- Inspect the cover for damage and replace if necessary.

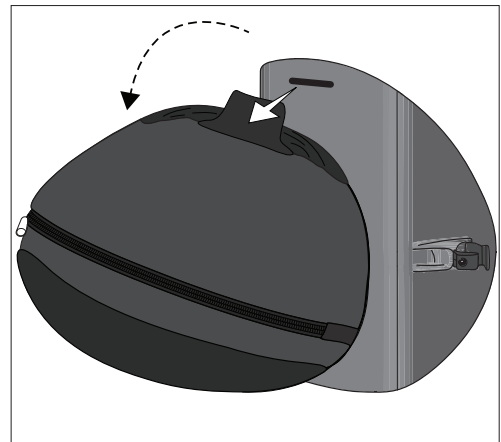
To Remove the Cover:



1. On the back and bottom side of the shell, pull the cover flap to release the cover from the fastener strip.

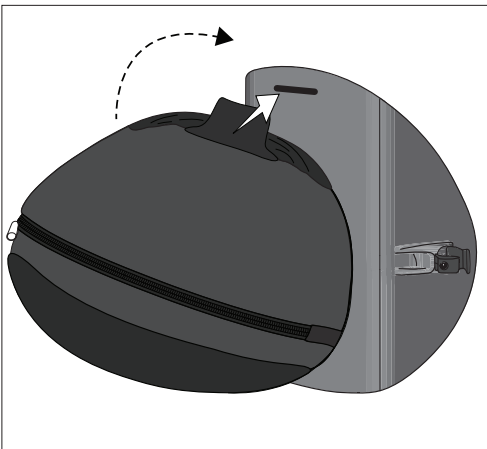


2. Pull the cover away from the shell, releasing it from the fastener strips on the front side.

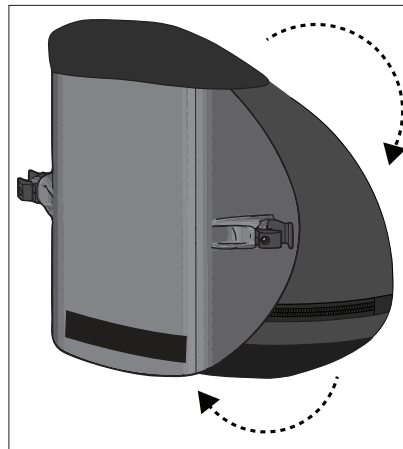


3. Flip the cover over the top of the shell. Release the attachment flap from the fastener strip. Pull the flap through the cover attachment slot to remove the cover.

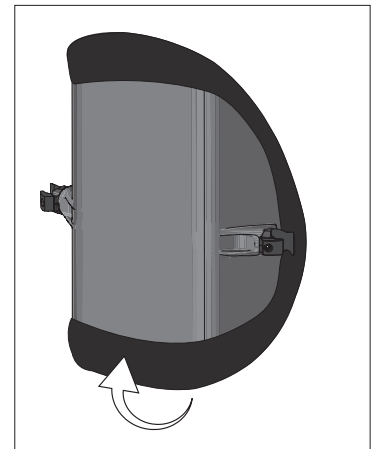
To Install the Cover:



1. At the top of the shell, slide the attachment flap through the cover attachment slot. Press the fastener strip on the shell and the attachment flap together to secure the cover. Flip the cover over the top of the shell.



2. Fold the cover flap over the top of the shell and press to fastener circles. Make sure the zipper side of the cover faces the shell, and press to attach the cover to the fastener strips on the front side of the shell.



3. Pull the bottom end of the cover over the bottom edge of the shell. Press the fastener strip on the shell and the cover flap together to secure the cover.

Foam Pad and Air Insert Removal and Installation

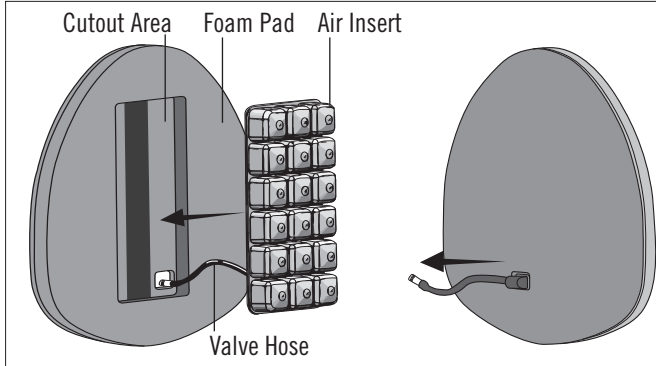


Warning: Inspect the foam and air insert for damage and replace if necessary.

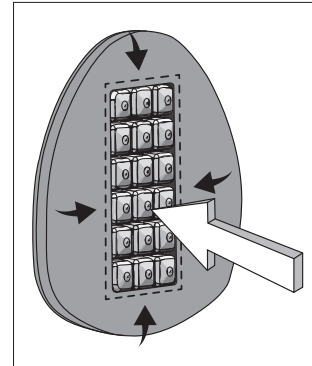
To Remove the Foam Pad and Air Insert:

1. Detach the cover and foam from the back shell.
2. Unzip and remove the cover.
3. Detach the air insert from the fastener strip in the cutout area of the foam pad.
4. Pull the valve hose of the air insert back through the hole in the foam pad.

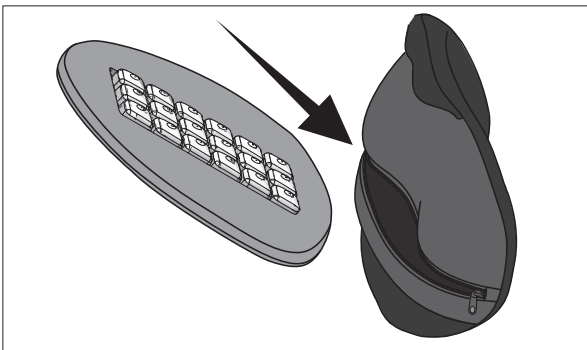
To Install the Foam Pad and Air Insert:



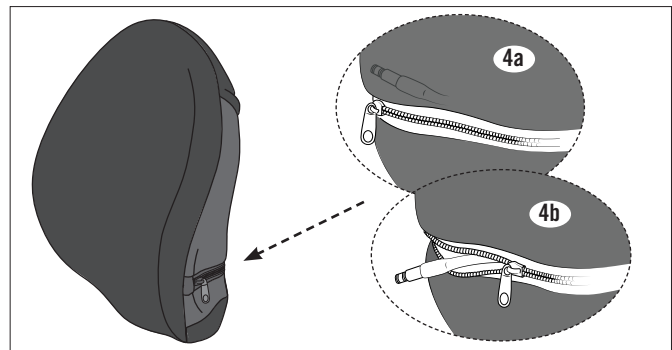
1. Slide the valve hose through the hole in the foam pad. The air cells should face out.



2. Tuck the edges of the air insert under all of the edges of the cutout area. Press to secure the air insert to the fastener strip in the cutout area.



3. Unzip the cover. Place the foam pad / air insert inside the cover. The air insert should face the front of the cover. The wide and narrow ends of the foam pad should be aligned with the wide and narrow ends of the cover.



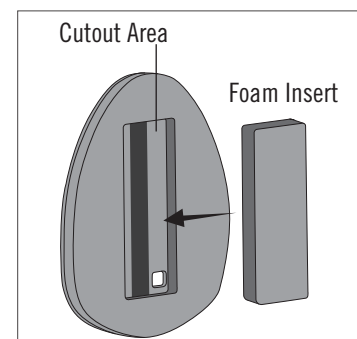
4. **a. If adjustment of the air insert is not needed:** Place the valve hose inside the zipper area. Zip the cover closed. Install the cover on the back shell.
b. If adjustment of the air insert is needed: Partially unzip the cover to allow access to the inflation valve. Install the cover on the back shell. See **To ADJUST THE AIR INSERT**.

Foam Insert Installation



Warning: The air insert and the foam insert are not intended to be used together.

1. Remove the air insert from the foam pad. See **To REMOVE THE FOAM PAD AND AIR INSERT**.
2. Align the foam insert with the cutout area. Press to secure the fastener strips.
3. Unzip the cover and place the foam pad with the foam insert attached into the cover.
Note: The side of the foam pad with the foam insert should face the front of the cover. The wide and narrow ends of the foam pad should be aligned with the wide and narrow ends of the cover.
4. Zip the cover closed and install the cover on the back shell.



Air Insert Adjustment



Warnings:

- Check inflation frequently, at least once a day!
- The air insert must be used with the air cells facing the individual.
- The individual's comfort level may be reduced if the air insert is the wrong size, if it is not positioned correctly or is under-inflated or over-inflated.
- If the air insert does not appear to be holding air, see TROUBLESHOOTING. If the air insert is still not holding air, replace the air insert with the foam insert and contact ROHO, Inc. or your distributor.
- Changes in altitude may require adjustment to the air insert.
- Keep the air insert away from sharp objects.



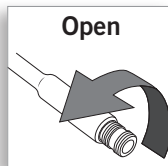
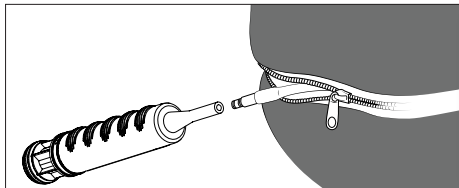
DO NOT:

- use the air insert as a seat cushion.
- use the inflation valve or hose as a handle to carry or pull the air insert.
- use the air insert as a water flotation device (e.g., a Life Preserver).
- use the following with an air insert: a pump, cover, foam pad or repair kit other than those provided by ROHO, Inc. Doing so may void the product's warranty.

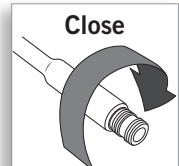
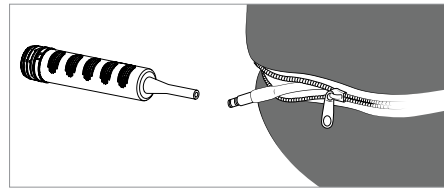
Caution: If the air insert has been in temperatures less than 32°F / 0°C and exhibits unusual stiffness, allow the air insert to warm to room temperature. Then open the inflation valve, roll up the air insert, and then unroll it until the polyurethane is soft and pliable again. Repeat adjustment instructions before using.

To Adjust the Air Insert:

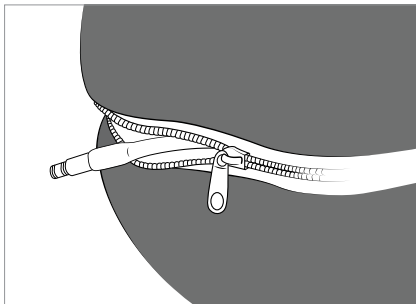
Before adjusting the air insert, complete installation of the cover and AGILITY CARBON.



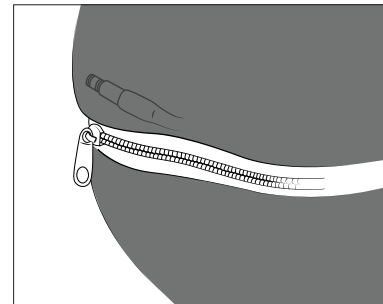
1. Slide the rubber nozzle of the hand pump over the inflation valve. Pinch the nozzle and open the inflation valve. Inflate the air insert until it feels firm.



2. Pinch the rubber nozzle of the hand pump and close the inflation valve completely. Remove the hand pump.



3. The individual should be seated in the wheelchair in their normal position. Open the valve. Remove air until the individual is comfortable. Close the valve.



4. Detach the cover flap closest to the zipper. Place the valve hose inside the cover. Close the zipper and reattach the cover flap.

Accessories



Warning: DO NOT install accessories on an AGILITY CARBON while the individual is in the wheelchair.

ROHO AGILITY Lumbar Support Pad

The Lumbar Support Pad provides added support to the lumbar region. Package contents include hook and loop fastener strips. The hook side of the fastener strip is pre-attached to the back of the Lumbar Support Pad.

To Install a Lumbar Support Pad:

1. Detach the cover flap closest to the zipper and unzip the cover.
2. Place the lumbar support inside the cover positioned at the curve of the spine, or where it is most comfortable.
Notes: The Lumbar Support may be placed either in front of or in back of the foam pad.
Placement behind the foam pad is recommended with the air insert.
Placement in front of the air insert may reduce the performance of the air insert.
3. Remove the backing from the loop side of the fastener strip and secure the lumbar support pad in the desired position.
Note: If the loop fastener strip is attached to the inside of the cover, the fastener strip may need to be replaced after multiple cover washings.
4. Zip the cover closed and re-attach the cover flap.

To Remove a Lumbar Support Pad:

1. Detach the cover flap closest to the zipper and unzip the cover.
2. Carefully detach the hook and loop fastener strips from each other.

Troubleshooting

For additional assistance, contact your clinical caregiver, distributor, or ROHO, Inc.	
The back cane hardware is loose on the wheelchair back canes.	The wheelchair back canes are too small. If the back canes on your wheelchair are ¾" (2.0 cm) in diameter, you must replace the Outer Cane Clamps with ¾" Outer Cane Clamps. See WHEELCHAIR COMPATIBILITY .
The hardware will not tighten or stay secure.	Make sure that the hardware is correctly sized (See WHEELCHAIR COMPATIBILITY). Make sure the hardware is correctly assembled and oriented to the back shell. The angle markers on the back shell should align with the marker on the inner cane clamp. See HARDWARE RE-ASSEMBLY .
The AGILITY CARBON appears to be unevenly installed.	Use a tape measure or ruler to make sure the back cane hardware is at the same height on the wheelchair canes.
The air insert is not holding air.	Inflate the air insert. Inspect the inflation valve and hose for damage. Confirm that the inflation valve is completely closed. Look for holes in the air insert. If very small holes or no holes are visible, follow the instructions in the Repair Kit provided with your product.
The air insert does not feel comfortable.	Add or remove air to adjust to your comfort level (see AIR INSERT ADJUSTMENT). Make sure the air cells are facing the individual and the cover is properly positioned (see COVER REMOVAL AND INSTALLATION and FOAM PAD AND AIR INSERT REMOVAL AND INSTALLATION).
The air insert slides out of position.	Make sure the air insert is properly positioned and the fabric back is secured to the fastener strip in the cutout area of the foam pad (see FOAM PAD AND AIR INSERT REMOVAL AND INSTALLATION). The perimeter of the air insert should be tucked in between the foam layers around the edge of the cutout area.

Maintenance



Warning: DO NOT continue to use an AGILITY CARBON if any part is broken, cannot be tightened, or is not functioning properly. Periodically, the AGILITY CARBON should be thoroughly inspected by a qualified technician.

Check daily to confirm the tightness of AGILITY CARBON screws and hardware. Re-tighten loose screws, following the instructions in this manual.

Check components daily for wear or damage and replace if necessary.

Disposal

The components of the products in this manual are associated with no known environmental hazards when properly used and when disposed of in accordance with all local/regional regulations. Incineration must be performed by a qualified, licensed waste management facility.

Limited Warranty

Limited Warranty Term, from the date the product was originally purchased: Back Shell and Cane Hardware: 36 months; Cover, Foam Pad, Foam Insert, Lumbar Support Pad and Air Insert: 18 months. See also the ROHO Limited Warranty supplement provided with your product, or contact Customer Care.

Cleaning and Disinfecting



Warning:

- Cleaning and disinfecting are separate processes. Cleaning must precede disinfection. Before use by a different individual: clean, disinfect, and check product for proper functioning.
- Follow safety guidelines on the chemical containers.






















Cautions:

- DO NOT use abrasives such as steel wool or scouring pads on components of AGILITY CARBON.
- DO NOT use cleaning products containing petroleum or organic solvents [i.e. acetone, toluene, Methyl Ethyl Ketone (MEK), naphtha, dry cleaning fluids, adhesive removers] on components of AGILITY CARBON.



= Wipe with damp cloth

AGILITY Component	To Clean:	To Disinfect:
Back shell and hardware:	Hand wash in warm (40°C) water with soap and a sponge. Rinse with clean water. Wipe dry with a clean cloth and then allow to air dry completely.  	Wipe gently with a cloth dampened with a household disinfectant. Rinse with clean water. Wipe dry with a clean cloth and then allow to air dry completely.  
Cover: Notes: Remove the foam and air insert from the cover prior to cleaning and disinfecting. Secure the hook and loop fastener strips at both ends of the cover. Turn the cover inside out. Zip the cover closed to avoid snags.	Machine wash in warm (40°C) water with mild detergent. Tumble dry low.  	Hand wash using quaternary ammonium disinfectant (Follow product label instructions). Rinse thoroughly with clean water. The cover may also be machine washed in hot (60°C) water to disinfect. Tumble dry low.  or  <p>Note: The method of disinfection should be determined based on disinfection needs.</p>
Foam pad, foam insert and lumbar support pad: Note: Remove the foam components from the cover prior to cleaning.	Wipe lightly with a damp cloth. DO NOT use soap. DO NOT submerge in water. Wipe off with a clean cloth. Completely air dry before replacing in cover.  	Note: Disinfectants are NOT effective on porous surfaces such as foam. Replace soiled or contaminated foam components with authorized ROHO foam components only. Replacement foam components may be purchased separately. Soiled or contaminated foam components MUST NOT be used by different individuals.
Air insert: Notes: Remove the air insert from the cover and foam pad prior to cleaning and disinfecting. Make sure the valve is closed. DO NOT allow water or cleaning solution to enter the air insert.	Place in a large sink or basin with warm (40°C) water. Hand wash, using mild liquid hand soap, hand dishwashing liquid, laundry detergent, or a multipurpose detergent (Follow product label instructions). Gently scrub all cushion surfaces, using a soft, plastic bristle brush, a sponge, or a cloth. Rinse with clean water. Air dry. DO NOT machine wash or dry. DO NOT expose to direct sunlight.    	Hand wash in warm (40°C) water using 1 part household liquid bleach per 9 parts water. Rinse thoroughly with clean water. Air dry. DO NOT machine wash or dry. DO NOT autoclave.  +  1:9   



Mailing/Shipping Address:
1501 South 74th Street, Belleville, IL 62223-5900, USA

Administrative Offices:
100 North Florida Avenue, Belleville, IL 62221-5429, USA

U.S.: 1-800-851-3449 Fax 1-888-551-3449
Outside U.S.: 1-618-277-9150 Fax 1-618-277-6518

ROHO.com



The Quality Management System
of ROHO, Inc. is certified to
ISO 9001:2008 and ISO 13485:2003.